



Tanunda
Lutheran Home Inc.

TIT

TAT

MONTHLY NEWSLETTER
TANUNDA
LUTHERAN HOME INC

27 Bridge St Tanunda SA 5352

- ★ Phone : (08) 8563 7777
- ★ Fax: (08) 8563 7799
- ★ Email: info@tlhome.com.au
- ★ Website: www.tlhome.com.au
- ★ Facebook: Tanunda Lutheran Home

The Home is a Christian Community where, in a family environment, Residents and Staff provide mutual care.

Jesus Christ said:
"Love one another as I have loved you"
John 13:34

DECEMBER 2020

*Lutheran
Church
of Australia*



Chaplain's Reflection



"Do They Know It's COVID Time"

One of the funnier scenes in the recent SA lockdown was vision of a deserted Rundle Mall, with a cheesy version of "Do they know it's Christmas time" blaring out on the PA System for nobody to hear. A Christmas without shopping is inconceivable. And unfortunately a Christmas without COVID seems inconceivable this year too.

So this year there'll no doubt be a series of Christmas cards with Mary and Joseph wearing grungy middle-eastern face masks, of shepherds having to socially distance on their visit, and of wise men wisely deferring the camel ride west because they'll have to spend 2 weeks in mandatory quarantine in a dungy Inn, giving King Herod every chance to arrest them before they get a chance to shoot through...

The silly season is upon us! And we'll need to keep our sense of humour if Christmas needs to be more quiet than usual. My interstate guests are aborting their plans already. That's sad for us. But perhaps good to know already so that we can plan our quiet Christmas. If things turn out much better, we'll all celebrate that fact.

Spiritually, Christmas celebrates a God who overcomes all barriers to come to us and share his love with us. Jesus modelled this by touching the untouchable, accepting the unacceptable, remembering the forgotten. We try to do this as best we can in an organisation that carries Jesus' name. And we'll certainly do this every way we can.

And here's hoping Santa does his hand hygiene well before dropping his presents down my chimney this year. Better still, perhaps he should take the year off!



God bless,

Chaplain Ian.

HAPPY BIRTHDAY

DECEMBER



2 Audrey Leske



6 Gordon Fechner

13 Elaine Leditschke

13 Ronald Grossman



20 Alan Hall

20 Dot Warren

22 Ruth Illman



23 Andrew Pearce



29 Peter Mattner

31 Venus Bessell



The **DEADLINE** for all:
News / Information / Stories - January 2021 edition is
Monday 21st December 2020

Email: rachel.strudwick@tlhome.com.au

TIT TAT TEAM consists of many who put in the hard yards to make this
amazing edition happen.

Lee Martin & Rachel Strudwick - TLH

Geoff Munzberg - TRL

And all who help deliver the Tit Tat throughout the Home, IRL & beyond.

Welcome

Permanent

Lorna Russack
Arnold (Lin) Kowald
Reginal (Barry) Falland

DEATHS

*Our deepest sympathy
to the families of*



Marjorie Abbott 19th Nov

May they rest in peace ..



What did the
Gingerbread Man
put on his bed?

A cookie sheet!



TLH SHOPPING BUS

Please remember to book -
They will only be travelling to
Tanunda until further notice
Thank you



Wednesday	2nd December Tanunda
Wednesday	9th December Tanunda
Wednesday	16th December Tanunda
Wednesday	23rd December Tanunda
Wednesday	30th December Tanunda

**The Bus will pick you up from your home - ONLY
if you have booked**

A message from Kim Hahn,

People, Culture, and Customer Service Manager



When I started writing this article I felt that it was so strange to be writing about Christmas and the end of the year, when as it happens, I write it following the week that SA began it's circuit breaker Stay at Home directive, following the confirmed cases of COVID-19 in the Northern Suburbs (Parafield Cluster).

And then Christmas magically appeared at TLH! On Wednesday Morning, Residents and staff greeted the morning with a Christmas surprise. Santa (Charlie Sapio) and his elves had worked throughout the night to set up the most beautiful, creative and fun Christmas display at the entrance of ABG. Santa and his elves had been working hard for weeks to bring the display idea to life.

The energy and Christmas spirit that this true demonstration of our value Philanthropy has brought is just what we all needed. To hear and see the joy within our Residents and staff as they see and talk about the display is just lovely. Whilst the display was a surprise for the Residents and some of our staff, Santa had help from many TLH elves, who made items, donated items and helped set up.

Annette Boyce has also blessed us with the annual Christmas tree display that she provides to TLH each year in the Protea Lounge area, this year the display is even more beautiful to us because of the dedicated tree with crocheted Angels dedicated to our much loved and missed Gertrude Fisher.

To all of you who read this, especially our Residents, you have all had to go through so much this year, sacrificed your normal way of living, had time away from loved ones, had things happen in your life such as losing loved ones, being sick, being tested, isolating, missed milestone events like special birthdays and weddings, funerals, travel plans-all either cancelled, missed or adapted to accommodate the required changes.

You are all a true demonstration of our Peoples strength, comradery, positivity and above all, the demonstration of doing whatever it takes, without question or complaint, to keep safe and protect each other.

On behalf of the Staff, we wish you a beautiful Christmas season, a beautiful Christmas Day, and thank you for your love and support. We look forward to a New Year, may it be filled with building more precious memories with all of you.

Merry Christmas and Best Wishes,
Kim



*Santa (Charlie) and his setting up
elves, Britany, Mandy, and Belinda.*





Tanunda
Lutheran Home Inc.

News from Kim & Steph

(People, Culture & Customer Service Manager
& the Quality & Training Officer)

DEPARTMENT OF HEALTH



SA HEALTH

There have been five new cases of COVID-19 today in people aged in their teens through to their 50s, taking South Australia's total number of cases to 549.

PARAFIELD CLUSTER UPDATE

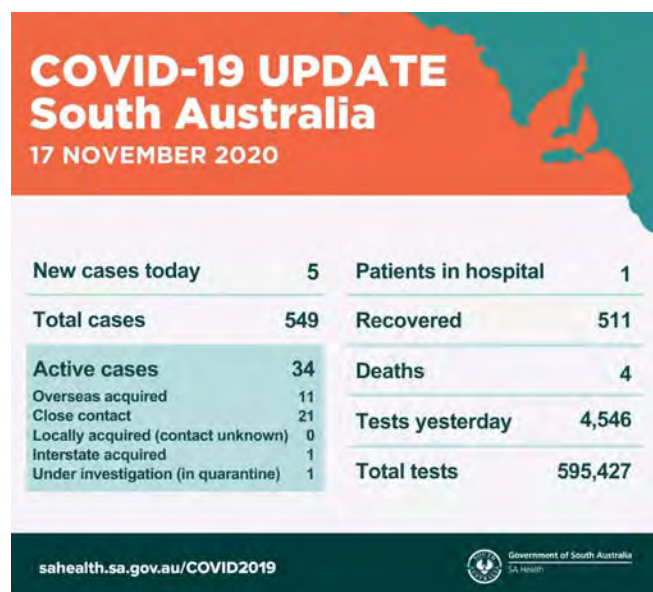
- Four of today's cases are linked to the Parafield cluster while one case is still being interviewed
- One case remains hospitalised in a stable condition
- All remaining positive cases are in a medi-hotel
- There are 14 people waiting test results as they are suspected cases
- As of midday today, the total number of cases linked to the cluster is 20

Five of the 18 cases reported today are international arrivals who are currently in a medi-hotel. Due to the high risk of onward transmission in the community, suspected cases are considered potentially infectious and immediate public health action is undertaken as a precaution.

There are 34 active cases and around 4,000 contacts of confirmed and suspected cases have been advised to quarantine and are being contacted daily for symptom checks. There have been 511 people cleared of COVID-19 and four reported deaths.

We're working hard to extend operating hours and capacity at our COVID testing sites. If you were unable to get tested today but you have symptoms, please visit a testing site tomorrow. More than 595,000 tests have been undertaken overall. For a list of sites visit www.sahealth.sa.gov.au/covidtesting

Anyone who visited the The Aquadome, 1 Crockerton Rd, Elizabeth on Saturday 14 November between 11.00 am – 1.30 pm must self-quarantine immediately for 14 days and seek testing.



There are health alerts currently in place for a number of locations and more details and advice can be found at

www.sahealth.sa.gov.au/covidcontacttracing

People experiencing any of the following symptoms should be tested for COVID-19:

- Fever or chills (in the absence of an alternative illness that explains these symptoms)
- An acute respiratory infection e.g. symptoms of cough, sore throat, runny nose, or shortness of breath
- Loss of smell or alteration in the sense of taste

Call the SA COVID-19 Information Line on **1800 253 787**, or go to www.sahealth.sa.gov.au/COVID2019, for more information.

Source: sahealth.sa.gov.au ~ 17/11/2020

DEPARTMENT OF HEALTH

In response to a number of new cases of COVID-19 in South Australia, the South Australian government has issued updated Directions for Residential Aged Care Facilities (RACFs).

The updated Directions outline the following requirements:

- Appropriate personal protective equipment (PPE) must be worn if a worker is providing care to a resident and cannot maintain a physical distance of 1.5 metres from the resident. The [South Australian COVID-19 Strategy for Residential Aged Care Facilities](#) outlines how and when PPE should be worn.
- Care workers must not provide personal care to a resident at a second RACF within 14 days of providing care to a resident at another RACF. Care workers, including contractors and volunteers, must notify the RACF of any additional places of employment.
- A worker must not enter or remain on the premises of a RACF unless they have completed COVID-19 infection control training.
- All aged care workers are reminded to complete COVID-19 [infection control training](#). Additional training modules, specifically designed for aged care workers are also available on the Department of Health's website.

Source: DOH Email ~ 18/10/2020

HOME CONTINUOUS IMPROVEMENT UPDATE

- Manual Handling Training Booked from the 26th November to 11th December. Specific training sessions have been arranged to cover issues identified in each department.
- All staff are required to complete the "Refresher COVID19 for Aged Care Workers" issued by SA Health on the 5th November, failure to complete this course will result in staff being removed from the Roster.
- Training for "Understanding Dementia & Responding to Behavioral Challenges " was cancelled due to the recent COVID-19 outbreak in SA, and will be rescheduled ASAP.
- Staff & Residents are encouraged to dress up on the 11th December in Christmas attire.

COMPLIMENTS, COMPLAINTS AND SUGGESTIONS

During October we received complaints about Care (9) Cleaning (3) Environment (4) Food (6) Staff (1) Lifestyle (1) Customer Service (1) Laundry (2) Wellbeing (1) and we are working with the comment maker(s) in resolving the concern to the comment makers satisfaction.

Also during October we received compliments about Care (3) Food (13) Other (1) Staff (17) Lifestyle (2) Customer Service (6) Maintenance (3) Wellbeing (1) Management & Communication (2) and a total of nine (9) suggestions.

We really value this feedback and thank you for taking the time to communicate your thoughts, opinions and experiences with us.

*We Wish you all a Very Merry Christmas and a Happy New Year !
Stay Safe this Holiday Season*

Kim & Steph

18th November 2020





Do you have a concern?

You can do something about it.
If you have a concern or feedback
about the aged care you or someone
else is receiving, you can talk to us.

1800 951 822
agedcarequality.gov.au

We encourage you to raise concerns with your service provider first. Your local contact within this service is:

Kim Hahn - People, Culture & Customer Service Manager
08 8563 7752 or kim.hahn@tlhome.com.au

Cherie Cheyne - Chief Finance Officer
08 8563 7768 or cherie.cheyne@tlhome.com.au

Lee Martin - Chief Executive Officer
08 8563 7733 or lee.martin@tlhome.com.au

If you can't resolve your concern with your service provider, you can contact the Aged Care Quality and Safety Commission

- Anyone can lodge a concern
- It is free
- You can be anonymous or confidential
- You can also give us feedback about the care you or someone else is receiving to help us when we check a service against quality standards
- Call us on 1800 951 822 or visit agedcarequality.gov.au for more information



Phone
1800 951 822



Web
agedcarequality.gov.au



Write
Aged Care Quality and Safety Commission
GPO Box 9819, In Your Capital City

Tanunda Lutheran Home supports your right to share compliments, suggestions, concerns or make a complaint.

- ◆ We welcome feedback and complaints as part of our commitment to provide a high-quality service.
- ◆ Tell us what we're doing well. We appreciate hearing from you.
- ◆ If you have a concern, we also want to hear from you.
- ◆ We understand the importance of resolving matters promptly within our service and aim to provide a welcoming environment for you to raise a concern or a complaint.
- ◆ We value open and timely communication. It benefits our ongoing relationship with you. We will work with you to address concerns and resolve issues.



Share Your Experience



You can also contact The Aged Care Quality & Safety Commissioner on 1800 951 822 or National Aged care Advocacy line on 1800 700 600. If you are deaf or have a hearing or speech impairment: call 1800 555 677 (National Relay Service) and ask for 1800 951 822.

If you need an interpreter: call 131450 (Translation and interpreting service) and ask for 1800 951 822 if you don't want to raise your concern with management.

For any Feedback – Comment / Complaint or Compliment complete the Share your Experience form located all around the facility, or alternatively direct your feedback to one of the key personnel:

Customer Service - Kim Hahn

Executive People, Culture & Customer Service Manager

(Including Catering, kim.hahn@tlhome.com.au or Ph: 8563 7752

Food Service

WHS, Maintenance)

Clinical and Care - Lee Martin

Chief Executive Officer

(including Allied Health lee.martin@tlhome.com.au or Ph: 8563 7733

& Lifestyle)

Financial - Cherie Cheyne

Executive Chief Finance Officer

(Accommodation & cherie.cheyne@tlhome.com.au or Ph: 8563 7768

Fees/Bonds)

Staff News



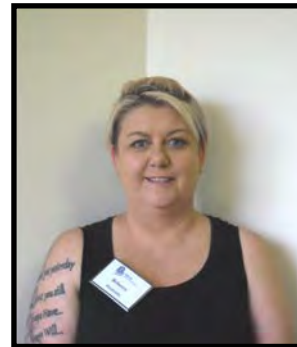
Please give a warm welcome to our new staff.



Jessica Hoppo
Hospitality



Tayla Oakley
Hospitality



Rebecca Hudson
Lifestyle



Kailia Baldock
Hospitality



Emily Noble
Enrolled Nurse



Roanne Hunter
Hospitality

Employee of the Month

October 2020

Congratulations

Rachel Strudwick

Well done and thank you to all the staff who received compliments for October

Phoebe Mickan, Shu Eguchi, Jane Jokudu, Steve Mberi, Ajay Randhawa, Natalie Rolton, Tracy Dowler, Paul Bergmann, Rubily Dusan, Sharryn Hueppauff, Tanya Snaith, Paula Andala, Jill Brinkes, Hayley Busch, Marney Jansen, Julie Hollitt, Giovanna Pfeiffer, Cathy Fahey, Tammy Wastell, Skye Fawcett, Chloe Tsirizos, Rebecca l'Anson, Lifestyle Team, Maintenance Team, Gardener, All TLH staff



To book an appointment with Kim Hahn you can contact the Executive Assistant by

Email: britany.mickan@tlhome.com.au

Ph: 8563 7733

You can also contact The Aged Care Quality & Safety Commissioner on 1800 951 822 or National Aged Care Advocacy Line on 1800 700 600 - if you prefer not to raise your concerns with management.

We Love Receiving Feedback

This form gives you the opportunity to "Share Your Experience" about the service Tanunda Lutheran Home provides. We value all your feedback (both positive and negative) as it assists us, as we strive for best practice.

This form may be filled in by anyone: residents, relatives, friends or staff. Please feel free to ask staff to assist you to complete the form. There will be no reprisal in connection with comments.

The Manager will acknowledge receipt of this form and after any necessary investigations and consultation you will be informed of the results either in person or by letter.

All the comments are forwarded to Stephanie Vickers (Quality & Training Officer) who coordinates the comment process and will ensure the correct person is notified of your comment.

You can also contact Stephanie directly via email at stephanie.vickers@tlhome.com.au or ask a staff member to direct you to speak with Stephanie.

You are also welcome to talk to People, Culture & Customer Service Manager – Kim Hahn if you are not satisfied with the way your complaint/suggestion is being handled.

Please return this form to the Quality & Training Officer at Tanunda Lutheran Home via drop of at reception or by posting to
Tanunda Lutheran Home
Attn: Quality & Training Officer
27 Bridge Street TANUNDA SA 5352



Tanunda

Lutheran Home

Enriching the lives of our older people

NURIOOTHA
RESIDENTIAL CARE

TANUNDA
RESIDENTIAL CARE

Share Your Experience



Comment Makers Information (Optional)

By providing your details it ensures that we are able to contact you and inform you of any and all outcomes from your comment.

Name: _____

Contact Number: _____

Email: _____

Address: _____

On Behalf of: _____

If you have provided your details but wish to remain anonymous please tick the box ☐

OFFICE USE ONLY

Date Received: _____ CCS Log No: # _____

Comment Maker Acknowledged:

☐ Phone Call ☐ Letter ☐ In Person

Comment forwarded to Department Leader: ☐

CI Required? Yes/No _____

Was the outcome satisfactory: Yes/No _____

Closure Date: _____

Follow Up: 3 Months ☐ 6 Months ☐ 9 Months ☐ N/A ☐

Other: _____

☐ Resident ☐ Relative ☐ Staff ☐ IRL Resident ☐ Other: _____

☐ Compliment ☐ Complaint ☐ Suggestion

Comments / Details:

☐ Would you like to discuss this issue with the relevant leadership team member?

Do you have any suggestions of how we can improve the services provided?

Thank you for being apart of our TLH family, our people are our greatest strength,
we appreciate your comment.





Christmas Season Notification

Dear Residents, Family Members and our Greater TLH Community,

Unfortunately, this year we are unable to host a Christmas Day Luncheon as previously held at Tanunda Lutheran Home.

We would like to encourage our Residents and family members who are able, to celebrate Christmas day by celebrating the day away from TLH. Options may be available by booking early through Restaurants and Hotels or at Home Gatherings.

We would like to ask that should you intend to take your loved one out for Christmas that you let us know prior to the day or alternatively, if you are wishing to have a visit at TLH with your loved one that you book the visit within plenty of time to avoid disappointment. The Emergency Management plan, (Emergency Management Residential Aged Care Facilities No. 14) (COVID-19) Direction 2020) still requires Residents to have only one short visit, per day of up to two people. Evidence of influenza vaccination 2020 must be provided prior to entry to TLH as per the Direction. This visit must be held in the Residents room, not in an area where contact with other Residents could occur.

We would also like to let you know that the Café will be closed from Friday December 25th and reopening on Monday 4th January. Reception will be closed for all public holidays only (office hours may vary).

In advance, we hope you all have a very precious Christmas season.



Tanunda
Lutheran Home Inc.



*ABG Artist
of the
Month*

Congratulations
**Lorraine
Russack**



TANUNDA

RETIREMENT LIVING



TLH Singers



Retirement Village Christmas Lunch

*Friday 11th of
December
12noon*

*Vine Inn
Nuriootpa*

*RSVP to Reception by
Friday the 4th of
December*

Ruth Rathjen advises that because of the new Covid-19 regulations, there will be no practices or performances of TLH Singers until the New Year



TIT TAT RECENTLY NOTICED



These people—from left: Ineke Garnaut, Marg Slater, Carolyn Redden, Kym Huxtable, Geoff Munzberg, Annette Ognjanovic, Elaine Leditschke—were recently seen sitting around a table in front of a whiteboard. Looks as if they are planning something!!?? THE BUZZzz is that Independent Living Residents will find out in December what this is all about!

Melbourne Cup celebrations at TLH!



LCC Barossa Christmas Hampers



This year the Lutheran Community Care will provided local families in crisis with more than 400 Christmas Hampers and we need your help.

LCC Barossa is seeking the help of Tanunda Lutheran Home to donate
jars of jam.

(This must be purchased from a store as homemade jam can not be accepted.) Donations can be left at reception or handed directly to a member of the Lifestyle team.

Thank you to people who have already made donations and thank you to Lutheran Community Care for looking after those in need.

LCC Barossa also provides toys and gifts for children 0-18 years of age. If you would like to help please keep in mind they cannot accept any used toys or gifts and cannot tale gift cards. Donations of toys can taken to Lutheran Community Care, 26 Second Street, Nuriootpa by Monday the 7th of December.

Making a difference together



Keep an eye on out for Santa's elves as they prepare a display to light the night as part of the

Barossa Bright.

An outdoor display for Residents and the community to enjoy will be going up in the next couple of days on Bridge Street.



COMMUNITY CLINIC & EXERCISE GROUP CHRISTMAS BREAK (including Moovers and Groovers)

Closed from Tuesday the 22nd of December
2020 for two weeks.

Resuming Tuesday the 5th of January 2021.

*Dates may be subject to change due to
COVID-19 restrictions.



The Trinity Court Library will be closed from the
24th of December and reopening on
Wednesday the 6th of January 2021.

Please contact the Lifestyle Team if you require any Library
items during this time.



Reception will be closed for all public
holidays and weekends only
(office hours may vary).

Merry Christmas

What do elves learn
in school?

The elf-abet.



What's red and white,
red and white,
red and white?

Santa Claus rolling
down a hill.





"Enjoying life with fun & friends"

What is the Barossa Club?

- ♦ Barossa Club is a social support group funded by the Commonwealth Home Support Program (CHSP).
- ♦ Barossa Club is available for people from 65 years, living in the local community, who live independently in their home within the Barossa Valley region, including Independent Retirement Living.
- ♦ A referral (individuals meeting the criteria) from My Aged Care is required to attend Barossa Club.
- ♦ All that is needed is a simple telephone call to My Aged Care on 1800 200 422 or alternatively visit the My Aged Care website.
- ♦ The very helpful My Aged Care staff will explain all that is required and are happy to answer any questions that you may have.
- ♦ The opening times for Barossa Club are Monday to Friday 9.00am to 3.00pm and closed on weekends and public holidays.
- ♦ A delicious two course lunch meal prepared by the wonderful TLH Catering Team is available to enjoy in Barossa Club and the cost is \$7.00.
- ♦ A bus service for pick up and drop off to your door if you live in Tanunda, Angaston or Nuriootpa is available for \$5.80 (Concession Rate).
- ♦ A variety of activities are offered in the morning and afternoon, including social time during morning and afternoon tea.



Wheel of Fortune



Connect Four



Playing Cards



Tai Chi



**Please feel free to contact
Tania Miller on 8563 7729 if you would
like to know more or would like to make
a time to have a chat.**

*Barossa Club - Fun, Games,
Food, Friends & Memories....*



Melbourne Cup



Dorcas Kernich and Doug Ramsey won "Best Dressed"



Wilf Fechner placing the winning piece in Pin the Jockey on the Horse



Norma Robinson, winner of the Chocolate Cadbury game.



Tania Miller and Ivy Parr



Yummy treats made by Staff Member, Marianne.



Thank you!

A big Thank You to everyone that helped make our Remembrance Day Poppies.





*Colour in your master piece ..
Be creative and colourful*

A 2020 Strawberry Fete

This year due to COVID-19, we are unable to hold our traditional strawberry fete.

“The Strawberry Fete is one of the major fundraisers for the years that goes towards Wellness and Lifestyle activities for our residents”.

This year we will be holding raffles and selling the items that the residents would have sold at the Strawberry Fete. These items will be available to purchase from reception or the lifestyle department. Some of these items include the much anticipated Mincer Biscuits, Hand Decorated Christmas decorations, Christmas gift tags and much more. New items will be added to the display each week until Christmas.

We would encourage everyone to dig deep with their support. Thank you and we look forward to hopefully holding our traditional Strawberry Fete again next year.



TLH Carols By Candlelight

Wednesday the 9th of
December from 6 - 7.30pm
in the Chapel

Rental Opportunities

Recliners - Fridges - Carpark's



Recliners - If you don't have a recliner or your waiting on a delivery, we can offer recliners for your comfort.

Fridges - If you would like a small fridge or a larger fridge, we can offer what suits your needs.

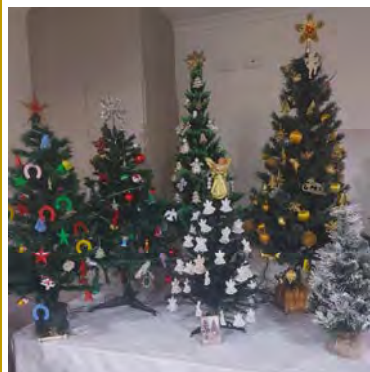
Car parking - Residents with a car, we can offer you a reserved park .

Chairs (normal chair) - Each room is supplied with one normal chair, if you are wanting more chairs for visitors or family, you will need to supply them, (folding is a good option, so not to take up room in residents rooms). With COVID-19, families are not to go into communal areas to visit they must stay within the residents rooms.

For all rentals prices and agreements, please see Sharryn Hueppauff.



*It's
Beginning
to Look
a lot Like
Christmas*



VOLUNTEER NEWS

Volunteers Morning Tea

WAITING TO BE CONFIRMED!!!

Volunteers Christmas Morning Tea will be held on Tuesday the 8th December from 10am - 11am.

Please **RSVP** to reception if you are available to come **by** the 1st Of December



Volunteering

If you would like to sign up to be a volunteer and make a difference in the lives around you, please arrange a time to come and see Belinda the Volunteer Coordinator.

We would love to have you as part of the TLH family.



Happy Birthday

To all of our wonderful Volunteers
for the month of

DECEMBER

What did the cow
get for Christmas?

A COWculator!



Message from Belinda Volunteer Coordinator



I just wanted to say a very big **thank you** to all the volunteers who have continued to support us during this year with COVID. We are so very blessed to have such wonderful support from all of our volunteers in so many different ways. As you may be aware this year has been full of uncertainties and just when we think we have the situation under control a new challenge pops up.

At the time of print we are still unsure about the volunteers appreciation morning tea Christmas celebration and if it can still go ahead or not.

Once I know for sure we will notify all the volunteers. Please rest assured that once the situation settles and is deemed safe we will reinstate the morning teas.

We would like to wish you all a very Merry Christmas and pray to see you all in the new year.



Tuesday 1st

10.15 Knit & Natter	Waratah
10.30 Moovers & Groovers Protea / TC1	Chapel
10.30 <i>Share and Tell</i>	Acacia
1.30 Christmas Water Ping Pong	Chapel
1.30 Men's Group	Men's Shed
3.30 Quiz Game	Acacia

Wednesday 2nd

9.00 - 12noon TLH Library Open	Trinity
10.30 Art and Craft	ABG
11.00 Church Service Waratah Only	Waratah lounge
1.30 TLH Christmas Tour	Chapel
1.30 Arm Chair Exercises	Acacia Lounge
2.00 1st Blessing of the Month	ABG
3.30 Present Wrapping	ABG

Thursday 3rd

From 10am Card Making with Irene / Coral	Protea
10.30 Wonders of Nature	Grevillea
10.30 Moovers & Groovers Waratah / TC2&3	Chapel
1.30 Residents Meeting	Chapel
1.30 Balloon Tennis	Grevillea

Friday 4th

9.00 - 12noon TLH Library Open	Trinity
10.30 Walking Group	Leaving from Acacia
11.00 Church Service Protea / TC only	Protea Lounge
1.30 Social Bingo	Waratah / Protea
1.30 Memory Games	Acacia Lounge
2.00 Happy Hour	Grevillea

Saturday 5th

There are a variety of different activities available, please ask a staff member for assistance.

Sunday 6th

10.30 - Church Service	Chapel
Independent living only	

Monday 7th

10.15 Singing in the Chapel	Chapel
11.00 Worship Service	Acacia Lounge
1.30 Social Bingo	Chapel
1.30 Bingo	Grevillea
2.30 Christmas Art	Grevillea

Tuesday 8th

From 10am Knit & Natter	TLH /ABG
10.30 Moovers & Groovers Protea / TC1	Chapel
1.30 Carpet Bowls	Chapel
1.30 Men's Group	Men's Shed
3.30 Quiz Game	Acacia

Wednesday 9th

9.00 - 12noon TLH Library Open	Trinity
10.30 Art and Craft	ABG
11.00 Church Service Waratah Only	Waratah lounge
1.30 Christmas Movie	Protea
1.30 Arm Chair Exercises	Acacia Lounge
2.00 A current Affairs	ABG

Thursday 10th

10.30 Wonders of Nature	Grevillea
10.30 Moovers & Groovers Waratah / TC2&3	Chapel
1.30 Christmas Activity	Protea
1.30 Bean Bag / Present Toss	Grevillea

Friday 11th

9.00 - 12noon TLH Library Open	Trinity
10.30 Walking Group	Leaving from Acacia
11.00 Church Service Protea / TC only	Protea Lounge
1.30 Social Bingo	Chapel
1.30 Memory Games	Acacia Lounge
2.00 Happy Hour	Grevillea

Saturday 12th

There are a variety of different activities available, please ask a staff member for assistance.

Sunday 13th

10.30 - Church Service	Chapel
Independent living only	

Monday 14th

10.15 Singing in the Chapel	Chapel
11.00 Worship Service	Acacia Lounge
1.30 Social Bingo	Chapel
1.30 Bingo	Grevillea
2.30 Christmas Art	Grevillea

PLEASE NOTE : ALL LIFESTYLE PROGRAMS MAY BE SUBJECT TO CHANGE.

Tuesday 15th

From 10am Knit & Natter TLH /ABG
10.30 Moovers & Groovers Protea / TC1 Chapel
1.30 Carpet Bowls Chapel
1.30 Men's Group Men's Shed
3.30 Quiz Game Acacia

Wednesday 16th

9.00 - 12noon TLH Library Open Trinity
10.30 Art and Craft ABG
11.00 Church Service Waratah Only Waratah lounge
1.30 Christmas Activity Protea
1.30 Arm Chair Exercises Acacia Lounge
2.00 A current Affairs ABG

Thursday 17th

10.30 Wonders of Nature Grevillea
10.30 Moovers & Groovers Waratah / TC2&3 Chapel
1.30 Christmas Activity Protea
1.30 Balloon Tennis Grevillea

Friday 18th

9.00 - 12noon TLH Library Open Trinity
10.30 Walking Group Leaving from Acacia
11.00 Church Service Protea / TC only Protea Lounge
1.30 Social Bingo Chapel
1.30 Memory Games Acacia Lounge
2.00 Happy Hour Grevillea

Saturday 19th

There are a variety of different activities available, please ask a staff member for assistance.

Sunday 20th

10.30 - Church Service Chapel
Independent living only

Monday 21st

10.15 Singing in the Chapel Chapel
11.00 Worship Service Acacia Lounge
1.30 Social Bingo Chapel
1.30 Bingo Grevillea
2.30 Christmas Art Grevillea

Tuesday 22nd

From 10am Knit & Natter ABG / Waratah
1.30 Biscuit Decorating Protea
1.30 Men's Group Men's Shed
3.30 Quiz Game Acacia

Wednesday 23rd

9.00 - 12noon TLH Library Open Trinity
10.30 Art and Craft ABG
11.00 Church Service Waratah Only Waratah lounge
1.30 Wheel Of Fortune Chapel
1.30 Arm Chair Exercises Acacia Lounge
2.00 Christmas Movie ABG

Thursday 24th

10.30 Wonders of Nature Grevillea
11.00 Church Service Chapel
1.30 Christmas Armchair Travel Waratah
2.00 Christmas Sing Along ABG

Friday 25th—CHRISTMAS DAY

10.30 - Church Service Chapel
Independent living only

Saturday 26th

There are a variety of different activities available, please ask a staff member for assistance.

Sunday 27th — NO CHURCH SERVICE
Monday 28th—PUBLIC HOLIDAY
Tuesday 29th

From 10am Knit & Natter TLH /ABG
1.30 Water Ping Pong Chapel
1.30 Men's Group Men's Shed
3.30 Quiz Game Acacia

Wednesday 30th

10.30 Art and Craft ABG
11.00 Church Service Waratah Only Waratah lounge
1.30 Christmas Activity Protea
1.30 Arm Chair Exercises Acacia Lounge
2.00 A current Affairs ABG

Thursday 31st

10.30 Wonders of Nature Grevillea
10.30 Moovers & Groovers Waratah / TC2&3 Chapel
1.30 Christmas Activity Protea
1.30 Balloon Tennis Grevillea

PLEASE NOTE : ALL LIFESTYLE PROGRAMS MAY BE SUBJECT TO CHANGE.

Christmas Word Search



CANDY CANE

CAROLS

CHRISTMAS

DECEMBER

ELVES

GINGERBREAD

JINGLE

HOLLY

LIGHTS

MERRY

NORTH POLE

ORNAMENTS

PRESENTS

REINDEER

SANTA

SLEIGH

STOCKING

TREE

WINTER

WREATH

